



Resin SteelBinding



 **Unibind®**

XU338

www.unibind.com



Performance

- The XU338 can bind up to 24 documents at once
- Perfect for professional use
- Binds up to 340 sheets
- Economical
- Safe

Easy to use

- Your work is done in 3 seconds, the XU338 does the rest
- User-friendly
- Operates fully automatically

Quality

- Perfect binding quality
- Super-strong, permanent bond
- Edit documents quickly and easily

Reliability

- Always ready to use
- No warm-up time
- Maintenance-free



SteelBack



SteelBook



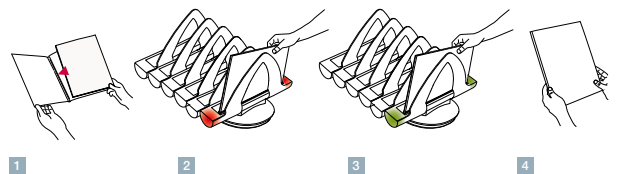
SteelCrystal



SteelMat

System Specifications

- | | |
|--------------------------|-------------------|
| • 380 x 530 x 240 mm | 15" x 15" x 9"1/2 |
| • 3.25 kg | 7.16 pounds |
| • 3 binding compartments | |
| • 3 cooling compartments | |
| • 220-240 V~50 Hz | 120 V~60 Hz |
| • 3 x 175 W | |
| • KEMA | CsaUs |



XU138



XU238



XU338



ST1025



BCC10

